

Please help us to help the Chernobyl Children

# Our Aid Team

Volunteers from all walks of life who give up their time freely to undertake the various tasks that get an aid convoy on the road to Belarus and return. Each year for over 10 years we have been taking aid on four convoys, each of three or four trucks, making a huge difference to the lives of children, many disabled, and their families who cope with the additional problem of poverty.

We can equip schools and institutions to help the teachers improve the enjoyment and education of the children. **But!** All this costs and we need additional funding if we are to continue this much needed and requested support.

**Please help!**



Teenagers at Vasilovka home for disabled children



Your donation could help change the life of a Belarusian Child

I enclose a donation towards Humanitarian Aid convoys of £

Name: .....

Address.....Post Code.....

Receipt required.....Yes/No. Please post to: The Treasurer: CCP (UK) 14 Beechnut Lane, Solihull B91 2NN

### GIFT AID DECLARATION

I want Chernobyl Children's Project (UK) to treat the enclosed donation of £  as a Gift Aid donation towards Humanitarian Aid deliveries to Belarus.

Signature.....Date.....

Please note that to sign this declaration you must be a UK Taxpayer who pays income tax or capital gains tax. The charity is able to reclaim 28p for each £1 donated. Cheques payable to: CCP(UK) and marked 'for Aid Convoys'.

Thanks for your help!

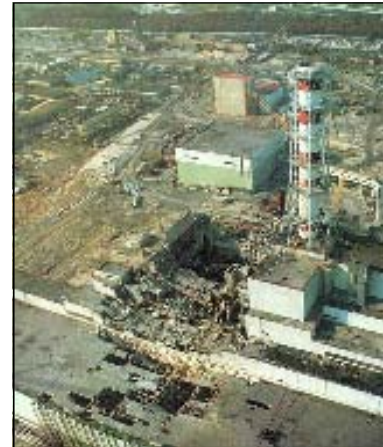
Mike Allison Trustee and Aid Co-ordinator  
07711 124065. email: [mkeallison@aol.com](mailto:mkeallison@aol.com)

Local Contact:

Chernobyl Children's Project (UK) [ccprojectuk@gmail.com](mailto:ccprojectuk@gmail.com)  
Kinder House Fitzalan Street Glossop SK13 7DL Registered Charity No. 1059832

CHERNOBYL CHILDREN'S PROJECT (UK)  
ПОДДЕРЖКА ДЕТЯМ БЕЛАРУСИ

Please support our  
**Humanitarian Aid Convoys to Belarus**



## Why Belarus?

On April 26th, 1986 there was an explosion at a nuclear power plant at Chernobyl, on the border between Ukraine and Belarus. Many tons of radioactive materials were thrown into the air.

Some of these were carried around the world, but 70 per cent of the radioactive substances blew north over the population of Belarus.

A quarter of the country's best farmlands and forests has been poisoned for hundreds of years by caesium 137 and strontium 90.

Where there is plutonium the land will be uninhabitable for ever!

*Hundreds of towns and villages were evacuated, and the entire country has been declared a zone of International ecological disaster.*

In southern Belarus thyroid cancer in children has increased by more than 100 times, due to the large amounts of radioactive iodine they have ingested, and there have been rises in many other types of cancer, diabetes, heart disease, respiratory problems, ailments of the digestive system and birth defects.

**Poverty  
Poor Health  
Disabilities**



Sasha at the Baby Home in Gomel

**Time has not been a healer for the people of Belarus and the greatest fear is for the children of future generations.**

# Humanitarian Aid Deliveries to Belarus

**What is Aid?** Any item that will help an association of needy families, school or institution that is working to improve the lives of unfortunate children in Belarus



## What do we take and where do we get it from?

Aid is received from many sources, companies and individuals who donate their surplus goods much of which is new and of excellent quality. This includes walking aid and wheelchairs for the disabled. We receive school equipment such as pens, paper, activity toys and lots of sports equipment, furniture such as chairs and tables. We are given early learning toys, art and craft materials, musical instruments and music centres. For the needy families, many living in poverty and with a disabled child, we send washing and cleaning materials, vitamins and medicines, good warm bedding and clothing, soap, shampoo, toothpaste and brushes, knitting and sewing machines, bicycles for children and adults, who walk miles to work each day and baby equipment including pampers. Good quality computers provide not only administrative tools for the institutions but learning and recreational activity for disabled children.



Happy kids with aid Bikes



A typical village home



Goods arriving at Selby

## How do we control the distribution of aid in Belarus?

Simply by working with many organisations in Belarus whose aim is to co-ordinate the welfare of poor families and those with disabled children. These organisations could be governmental or charitable but all have to adhere to the strict monitoring and supervision of the authorities that ensure the aid gets to the 'right' people.

CCP (UK) has lots of projects in Belarus. We have an office in the city of Gomel and a dedicated team of English speaking Belarusians who organise our activities there including the convoy administration and control of the aid with the receivers. To learn more about our projects in Belarus check out our website: [www.chernobyl-children.org.uk](http://www.chernobyl-children.org.uk)



## How do we get there?

We have three large trailers and a towing unit plus a smaller truck and we rely on the generosity of transport companies who loan other units to pull our trailers. Our journey is by ferry from Hull to Rotterdam and then by road some 1500 miles across Holland, Germany, Poland and Belarus.



## What the receivers say.

"Aid is a great support to our families who quite often spend most of their money on medicines

and their children's treatment. We are very grateful to you." **The Rogachev Association for families with disabled children.**

"Having received aid from you the disabled and non-walking children received pampers and rehabilitation gear which allowed them to move around. Families with many children and single parent families received clothes, bedding and footwear, toys, school kit, bicycles and many other things. We have started classes at a day centre respite unit for the disabled using the fabric, sewing machines, computers, pens, paper and sports equipment. **Elana Aleinikava Director, Dobrush Social Services Centre.** We approach you to supply humanitarian aid for 2124 families registered with us: These families include 121 single persons, 395 disabled people, 168 needy families, 1239 single parent families, 210 large families. The families need clothes, shoes, toys, hygiene items, pampers and wheelchairs. **Gomel City Social Services Centre**

## Can Belarus help its own people?

Since the Chernobyl explosion a large percentage of the annual national budget has been used to mitigate the effect of the radiation leaving very little to enhance the lives of the people and particularly that of disabled children. Many thousands of the country people were moved into high rise flats in the cities and their village homes demolished. Improvements to buildings, schools and facilities are progressing particularly in the towns and cities. However for many Belarusians, particularly those with sick or disabled children, poverty and illness are a way of life. Our aid deliveries create immediate support and hope to these families and encouragement to the communities for them to make improvements to their local circumstances by their own endeavours.



Children in our Mayflower Respite Centre

## What are the costs?

Members of our aid team provide us with a free warehouse, free maintenance and repairs to our vehicles and the convoy teams, all volunteers, donate towards convoy costs

Despite this the cost of Convoy is **£3500** per vehicle.

The value of the aid delivered on each vehicle is worth many times that amount.

**We have the aid. We need the funds to help us to continue to support the children of Belarus.**

Please help if you can. Many thanks.